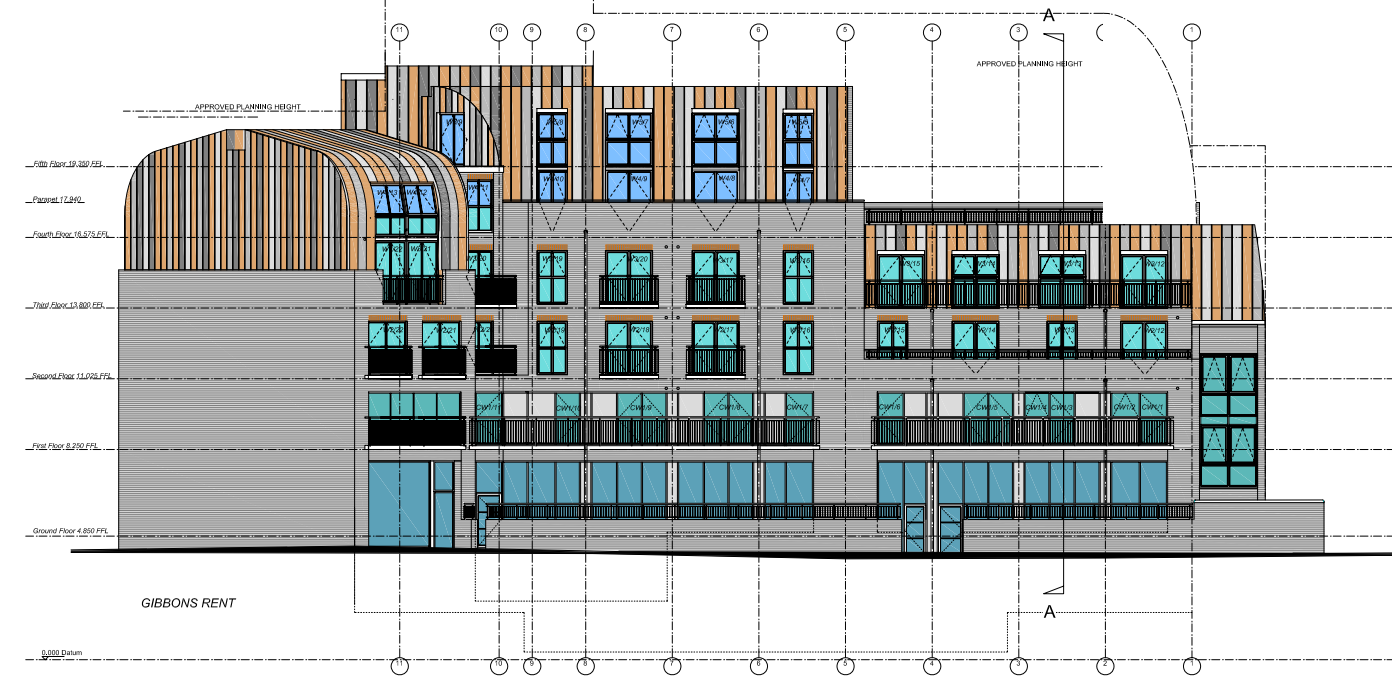




Brick schedule taken from Taylor Madeval supply lists	
LRM6 Brown glazed bricks cat. no. 32-27	Columns
LRM6 Medium red stock facings cat. no. 1312	Window dressings
LRM6 Staffs blue smooth perf. facings cat. no. 12020	OP Wall rise
LRM9 Belgrave yellow stock facings cat. no. 24713	General

Roof: Profiled metal.
 Terraced roofs: Landscaped areas with paving and planters on second, third, fourth, and fifth floor levels.
 Walls: London stock brick.
 Windows: Powder coated aluminum to residential units. Painted steel windows to take double glazing fronting onto Magdalen Street.
 Curtain walling to Ground and first floor facing Gibbons Rent.
 Balconies: Painted metal railings forming balcony fronts to Balconies, Juliettes and Terraces.



NOTES
 Contractors must verify all dimensions on site before setting out, making shop drawings or otherwise starting work. No dimensions for setting out any part of the work are to be scaled from this drawing unless off full-size details, and figured dimensions are always to take preference.

This drawing is the copyright of the Architects and is issued on the terms that it will not be reproduced or copied in whole or part nor will any information be furnished from it without the authority of the Architects. This drawing is to be read as preliminary unless checked.

All dimensions are to be checked on site.

If drawing transmitted as PDF File, do not rely on quoted scales. All references to drawings are to latest revisions.

Revisions	
A	26.2.06 Respond to comments of Building Control
B	26.4.06 S4A copies, on site storage, basement wall structure. The ground floor level is 26.027. It is hereby confirmed that the proposed structure is to be built to this level.

Nigel Upchurch Associates
 3 Graphie Square, Vauxhall Walk, London SE11 5EE
 Tel: 020-7526-8000 Fax: 020-7526-1400

Project: 17-24 Magdalen Street
 Alterations during course of construction
 Drawing title: Lower Ground & Ground Floor Plans
 Details developed for Building Control
 26.04.07B
 Dwg. No. Scale: 1:100 @ A1 Date: December 2005