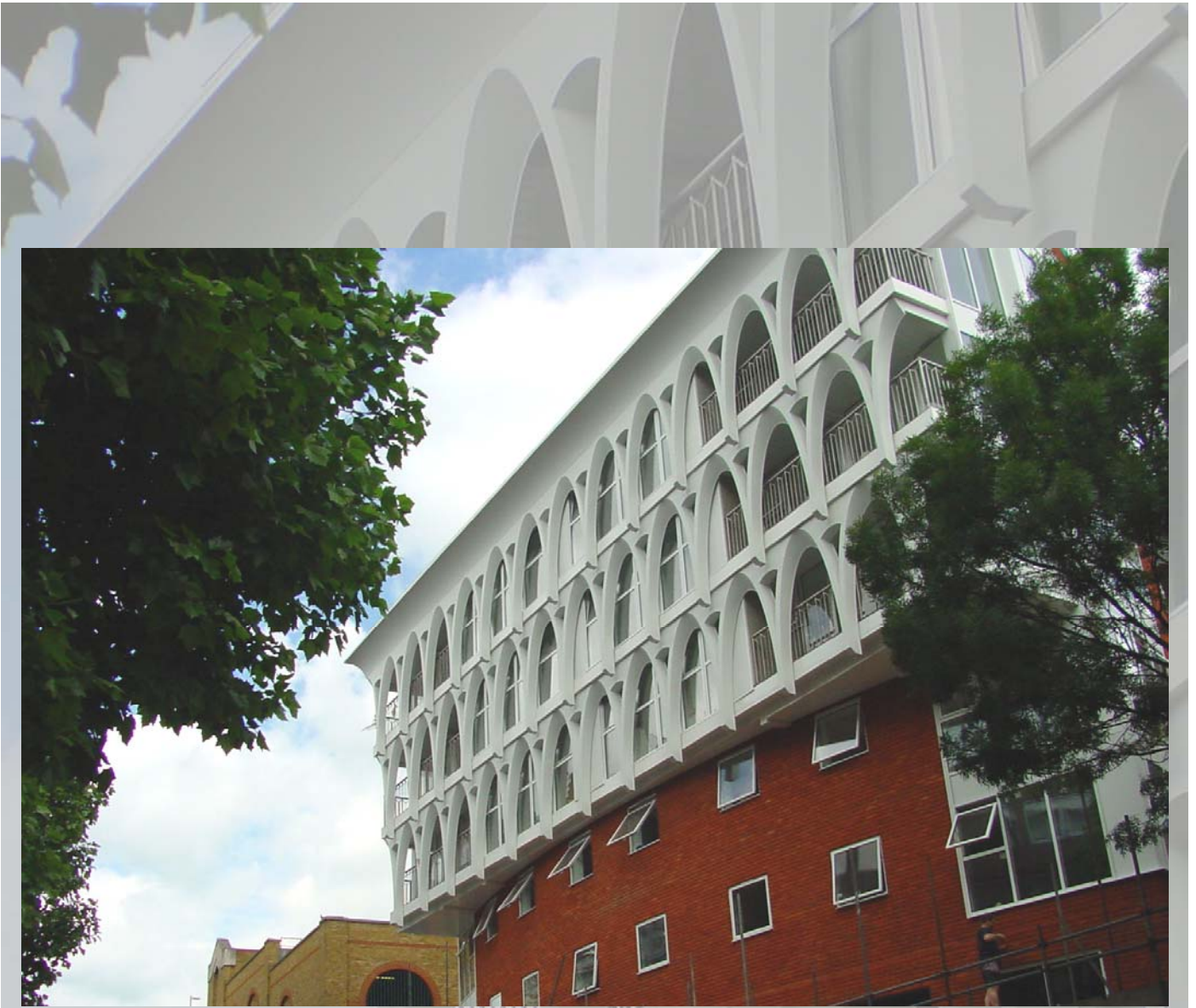


62-66 Farringdon Road Clerkenwell London EC1

Select Residential Apartments & Commercial Accommodation



*A stunning architectural designed landmark development in a prime location comprising of 15 two-bedroom apartments, (8 with balconies). A semi circular penthouse features a large roof terrace with unrivalled surrounding views. Ground and lower ground floors comprise of office accommodation*

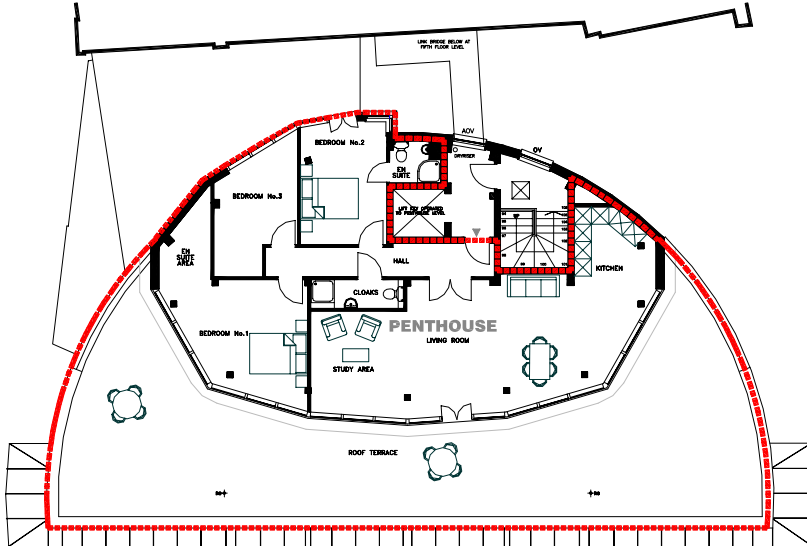
# 62-66 Farringdon Road Clerkenwell London EC1

Select Residential Apartments & Commercial Accommodation

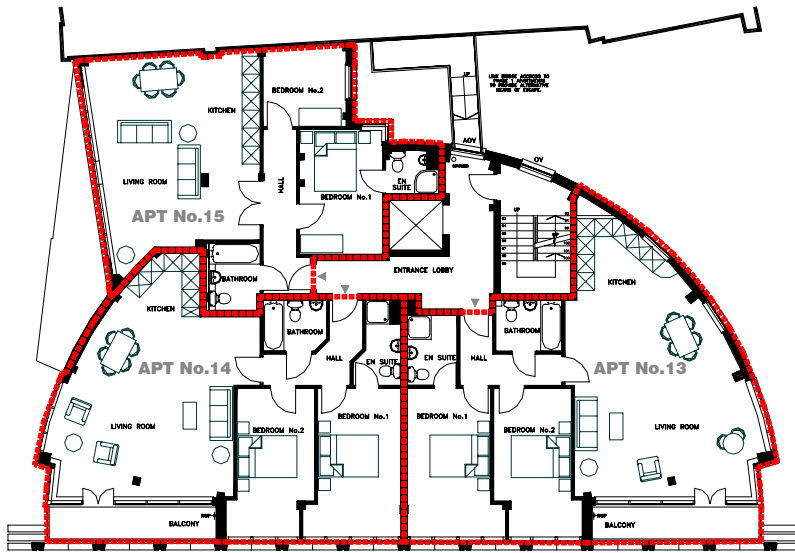


# 62-66 Farringdon Road Clerkenwell London EC1

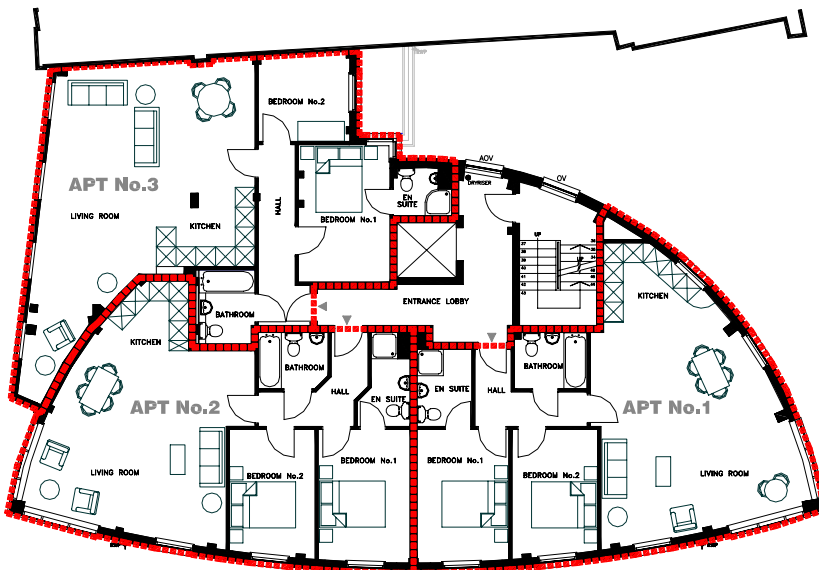
Residential Apartments & Penthouse Accommodation



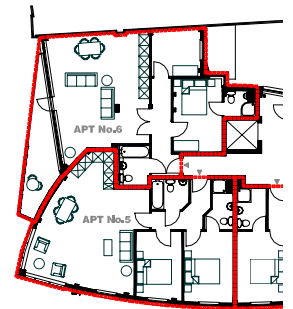
**SIXTH FLOOR PLAN (PENTHOUSE)**



**FIFTH FLOOR PLAN**



**FIRST FLOOR PLAN**



**SECOND FLOOR PLAN**

# 62-66 Farringdon Road Clerkenwell London EC1

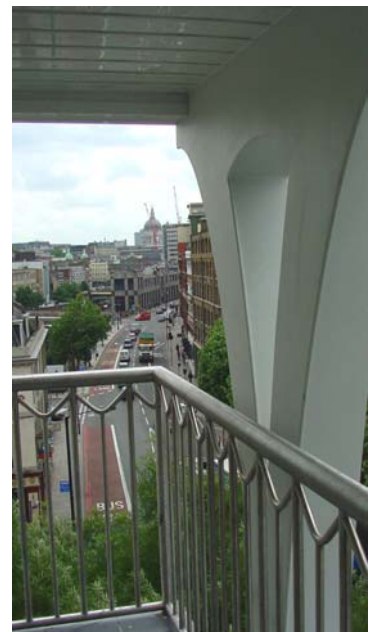
Residential Apartments & Penthouse Accommodation

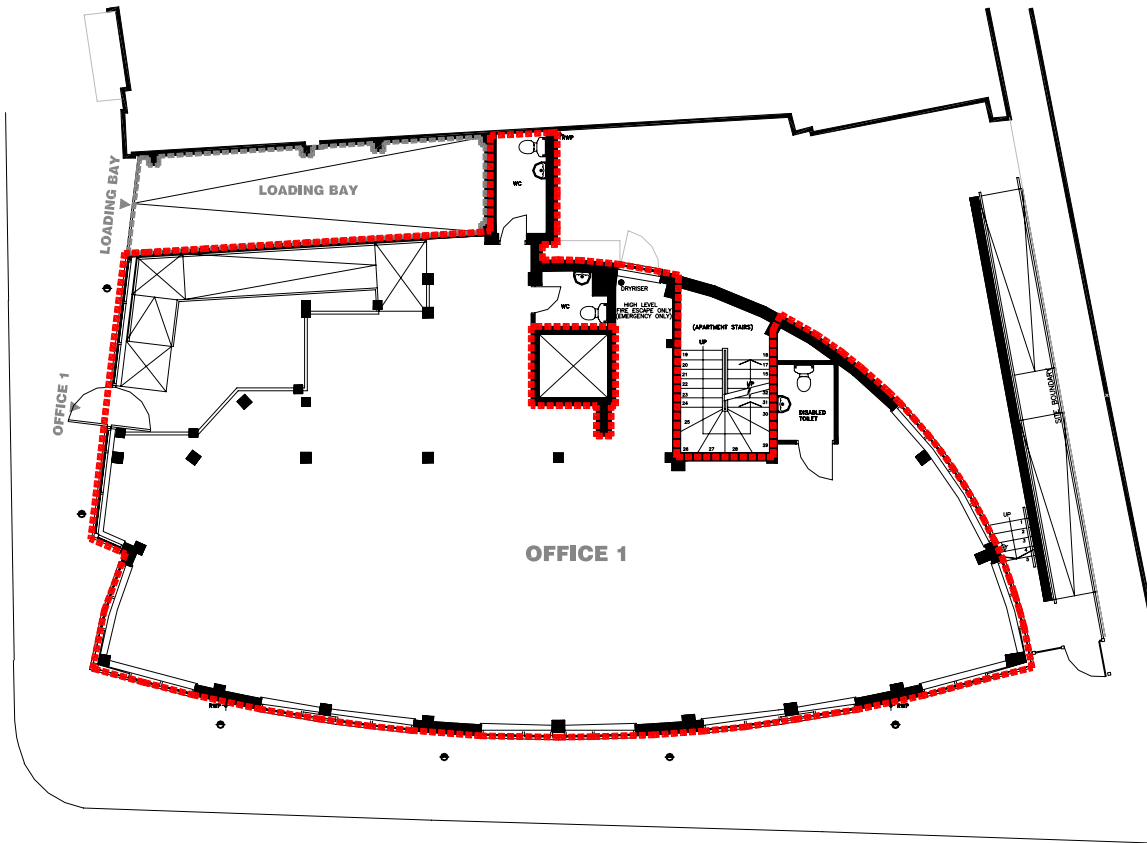
APARTMENT	TYPE	GROSS INTERNAL AREAS	GROSS EXTERNAL AREAS (BALCONY or TERRACE)	TOTAL GROSS AREAS (INTERNAL + EXTERNAL)
No.1	2 BED	854.0sq.ft.	N/A	854.0sq.ft.
No.2	2 BED	797.0sq.ft.	N/A	797.0sq.ft.
No.3	2 BED	871.0sq.ft.	N/A	871.0sq.ft.
No.4	2 BED	854.0sq.ft.	N/A	854.0sq.ft.
No.5	2 BED	797.0sq.ft.	N/A	797.0sq.ft.
No.6	2 BED + TERRACE	886.0sq.ft.	119.0sq.ft.	1,005.0sq.ft.
No.7	2 BED + BALCONY	962.0sq.ft.	38.0sq.ft.	1,000.0sq.ft.
No.8	2 BED + BALCONY	903.0sq.ft.	38.0sq.ft.	941.0sq.ft.
No.9	2 BED	770.0sq.ft.	N/A	770.0sq.ft.
No.10	2 BED + BALCONY	999.0sq.ft.	56.0sq.ft.	1,055.0sq.ft.
No.11	2 BED + BALCONY	941.0sq.ft.	56.0sq.ft.	997.0sq.ft.
No.12	2 BED	770.0sq.ft.	N/A	770.0sq.ft.
No.13	2 BED	1035.0sq.ft.	74.0sq.ft.	1,109.0sq.ft.
No.14	2 BED	978.0sq.ft.	74.0sq.ft.	1,052.0sq.ft.
No.15	2 BED	795.0sq.ft.	N/A	795.0sq.ft.
PENTHOUSE	3 BED + TERRACE	1,290.0sq.ft.	1230.0sq.ft.	2,520.0sq.ft.
<b>TOTALS</b>		<b>14,502.0sq.ft.</b>	<b>1,685.0sq.ft.</b>	<b>16,187.0sq.ft.</b>



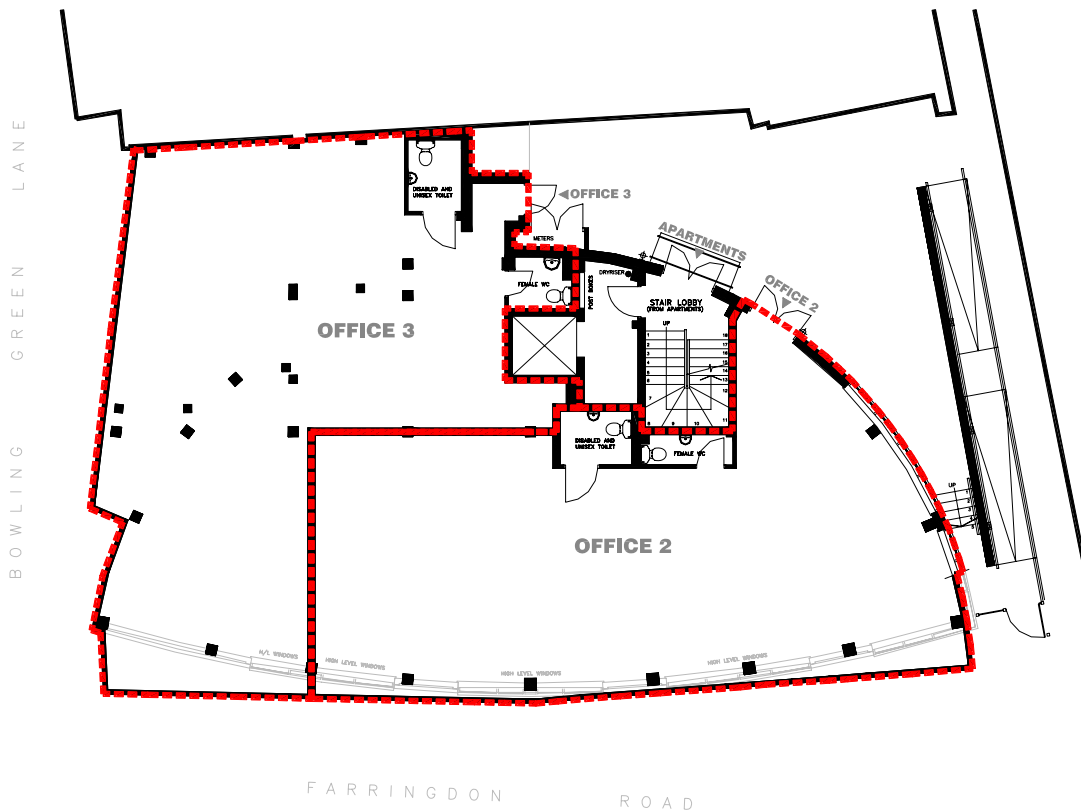
## Outline Specification

- Solid Oak wood flooring
- Solid Maple kitchens with Granite worktops
- Luxury bathrooms
- Independent Gas Central Heating
- Passenger Lift to all levels





**GROUND FLOOR PLAN**



**LOWER GROUND FLOOR PLAN**

# 62-66 Farringdon Road Clerkenwell London EC1

Commercial Units

OFFICE ACCOMMODATION	TOTAL GROSS INTERNAL AREAS
LOADING BAY	245.0sq.ft.
No.1 GROUND FLOOR	2,520.0sq.ft.
No.2 LOWER GROUND FLOOR	1,430.0sq.ft.
No.3 LOWER GROUND FLOOR	1,410.0sq.ft.
<b>TOTALS</b>	<b>5,605.00sq.ft.</b>



# 62-66 Farringdon Road Clerkenwell London EC1

Select Residential Apartments & Commercial Accommodation



# 62-66 Farringdon Road Clerkenwell London EC1

Select Residential Apartments & Commercial Accommodation



62-66 Farringdon Road is located on the junction with Bowling Green Lane.  
Nearest Underground Station is Farringdon Road.

A Development by



020 8446 4087

HURFORD

SALVI

CARR

**020 7250 1012**

37-41 ST JOHN STREET LONDON EC1M 4AN

FAX 020 7250 1015

[www.hurford-salvi-carr.co.uk](http://www.hurford-salvi-carr.co.uk)