

ROYAL COLLEGE STREET, LONDON, NW1



APARTMENT 4
LIVING ROOM & KITCHEN

A collection of newly built 3-bedroom maisonettes and newly converted 1-bedroom apartments all with outside space, that range from private gardens and balconies to terraces and creative roof spaces. All dwellings feature fitted kitchens with integrated appliances and contemporary style tiled bathrooms with white fittings. College Terrace is located a short distance north of Camden Town. The 1-bedroom apartments overlook College Gardens - a gated tranquil haven bordered by trees. The maisonettes enjoy views of attractive period homes that feature in this part of Camden.

- * FOUR 1 BED APARTMENTS * SIX 3 BED MAISONETTES *
- * CARPET IN BEDROOMS * WOODSTRIP FLOORING TO RECEPTION ROOMS *
- * LOW VOLTAGE DOWNLIGHTERS IN ALL ROOMS *
- * FITTED KITCHENS WITH INTEGRATED APPLIANCES *
- * CONTEMPORARY STYLE TILED BATHROOMS * VIDEO ENTRY *
- * INDIVIDUAL ALARM * GAS CENTRAL HEATING * NEW 130 YEAR LEASES *

PRICE: £340,000 - £439,950 LEASEHOLD

SUBJECT TO CONTRACT

REF: 056NH

IMPORTANCE NOTICE: 1. These particulars are prepared for guidance purposes only. They are intended to give a fair overall description of the property but are not intended to constitute any part of an offer or contract. 2. Nothing in these particulars shall be or deemed to be a statement that the property is in good structural condition or otherwise nor that any services, appliance, equipment or facilities are in good working order. 3. Whilst all the information contained in these particulars whether in text, plans or photographs is given in good faith, intending purchasers must make their own enquiries as to the accuracy of all matters upon which they intend to rely.

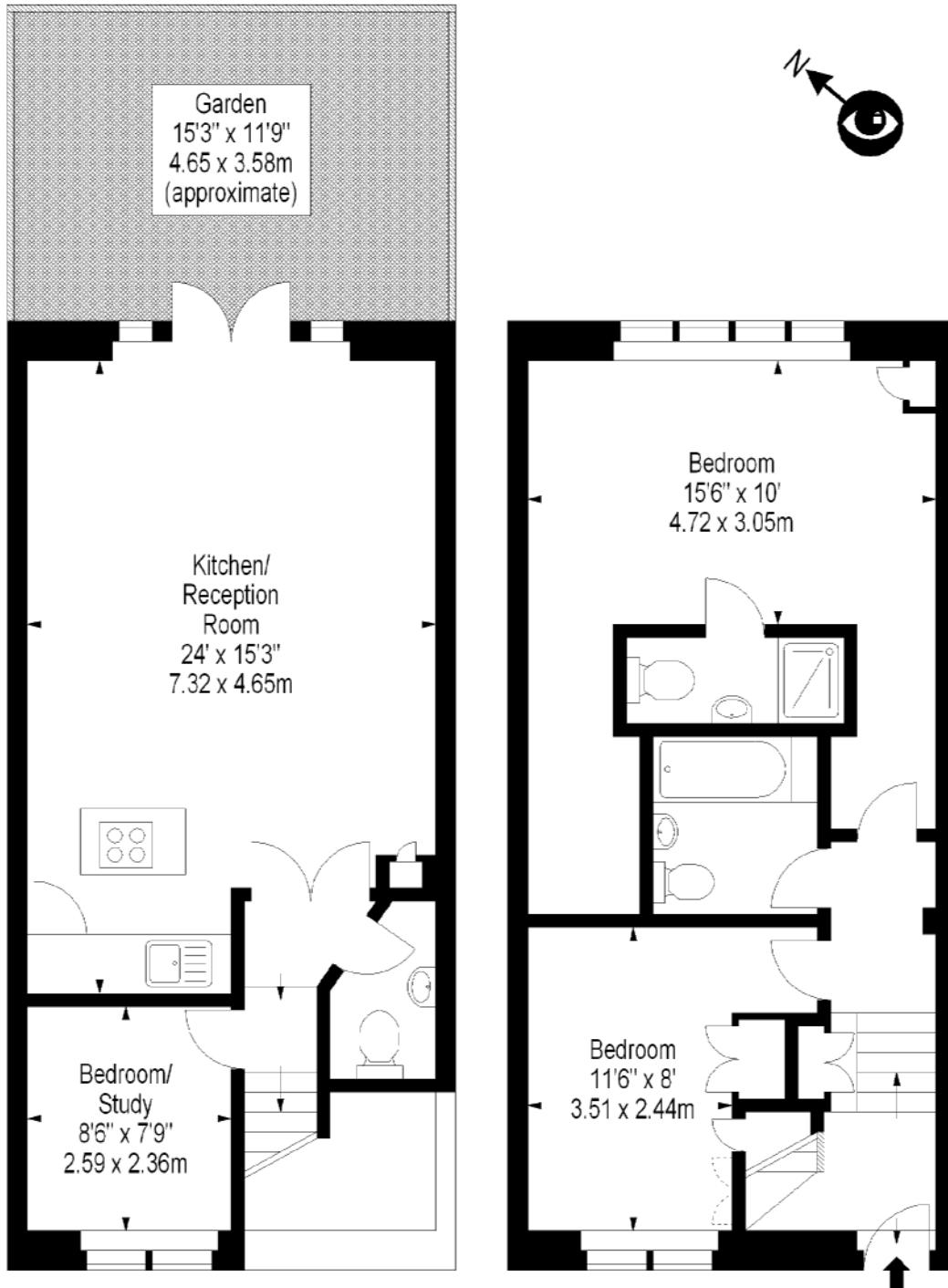
ACCOMMODATION SCHEDULE
230 – 234 Royal College Street, London, NW1 9NJ

Flat	Floor	Bed	Sq ft	Price:	Est. Weekly Rental
1	LG/UG	3	1,012	£439,950	£400 - £425
2	LG/UG	3	1,045	SOLD	£400 - £425
3	LG/UG	3	1,045	SOLD	£420 - £450
4	1st & 2nd	3	1,021	LET	£400 - £450
5	1st & 2nd	3	1,054	SOLD	£400 - £450
6	1st & 2nd	3	1,062	SOLD	£400 - £450
7	1st	1	639	SOLD	£300
8	1st	1	749	£340,000	£320
9	2nd	1	477	U/O	£250 - £275
10	2nd	1	599	SOLD	£250 - £275



APARTMENT 8
RECEPTION, GALLERY & KITCHEN

Flat 1, 230 - 234 Royal College Street, NW1 9NJ



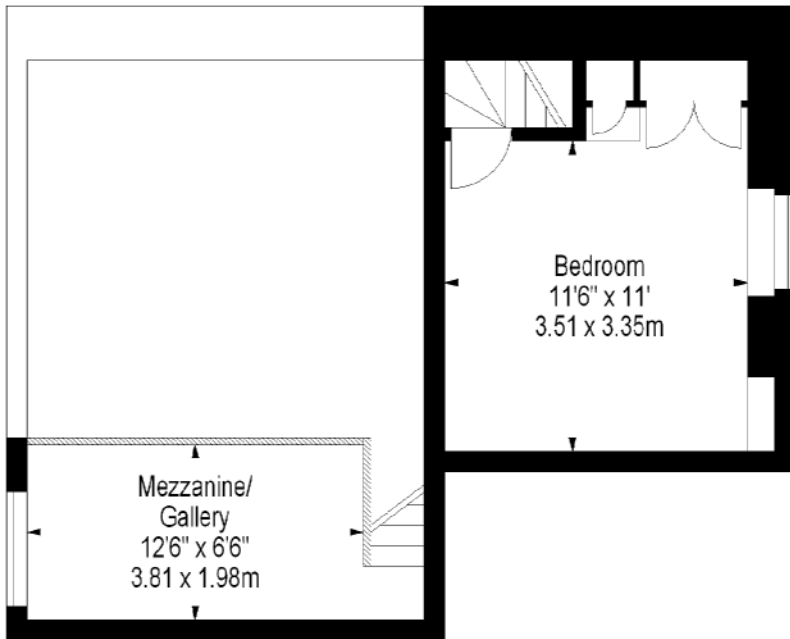
Lower Ground Floor

Upper Ground Floor

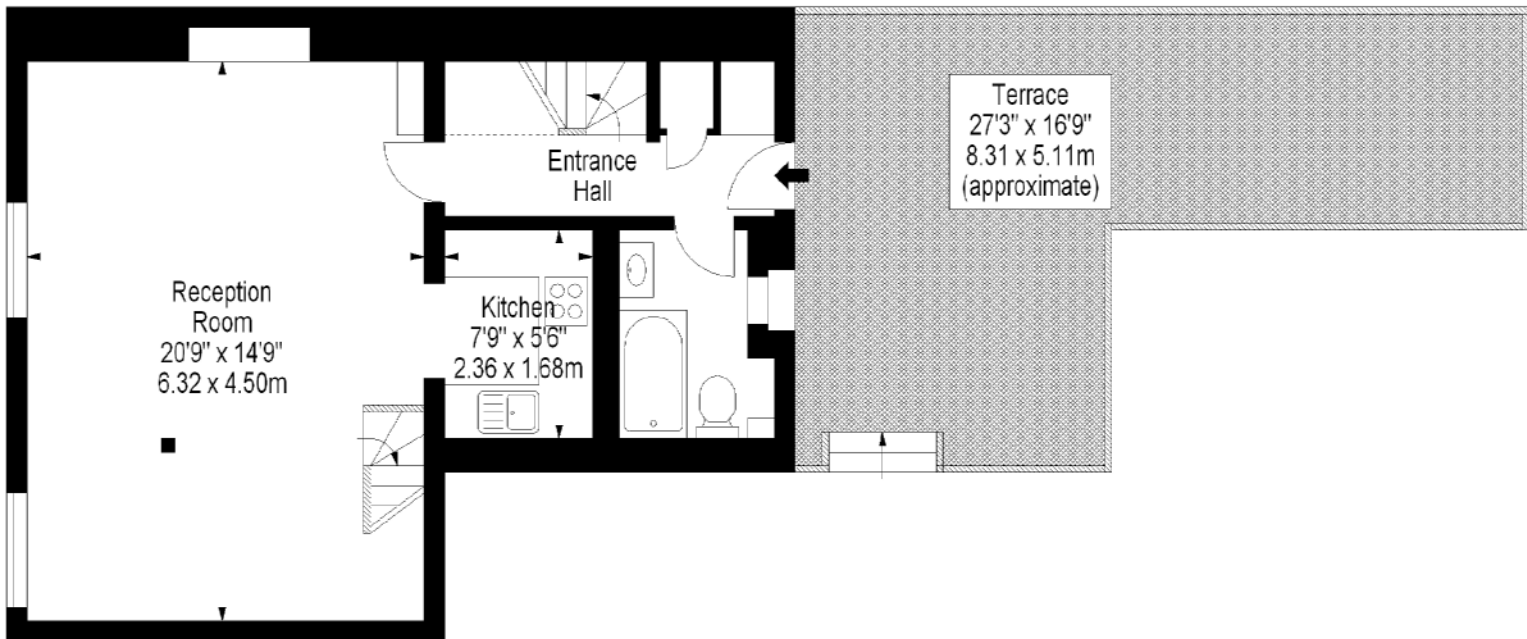
Approx Gross Internal Area 1012 Sq Ft - 94.01 Sq M

For Illustration Purposes Only - Not To Scale
Floor Plan from www.BigPropertyMarketing.com

**Flat 8,
230 - 234 Royal College Street, NW1 9NJ**



Second Floor



First Floor

Approx Gross Internal Area 749 Sq Ft - 69.58 Sq M

For Illustration Purposes Only - Not To Scale
Floor Plan from www.BigPropertyMarketing.com