

Shad Thames, London, SE1 2LA



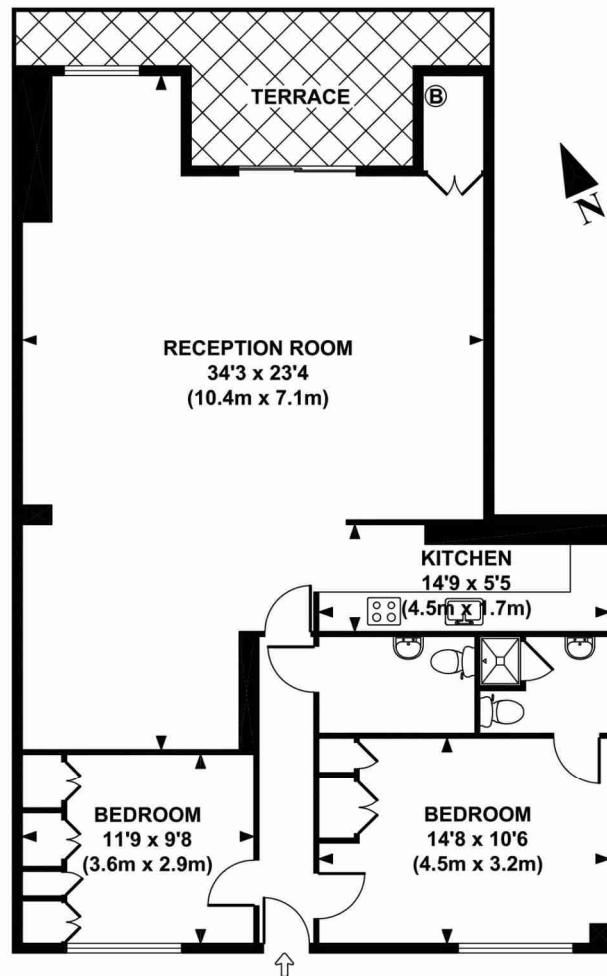
A large live/work space on the edge of Shad Thames occupying the ground floor of a purpose built development. There are 2 bedrooms and a large reception / work area at the rear of the apartment. There is also a small terrace.

1 Shad Thames is ideal as a business premises or living space. Tower Bridge and The City are a few minutes, in addition to the various bars and restaurants of the area. London Bridge and Bermondsey stations are both within easy walking distance

£435,000 Leasehold

Shad Thames, London SE1 2LA

SHAD THAMES, SE1



GROUND FLOOR
GROSS INTERNAL
FLOOR AREA 1087 SQ FT

APPROX. GROSS INTERNAL FLOOR AREA 1087 SQ FT / 101 SQ M

Ref: SA0225

Copyright Stirling Ackroyd 2006

This floorplan is for illustration purposes and may not truly reflect design or dimensions and should not be used for valuation or condition purposes.

Tenure: Leasehold
Service Charge: Awaiting Confirmation
Ground Rent: Awaiting Confirmation
Price: £435,000







